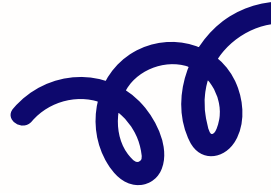


THE LOWELL SCHOOL
PARENT ASSOCIATION
MONTHLY NEWSLETTER - MARCH



Elementary/Middle School



HELLO LOWELL PARENTS!

We're excited to present our inaugural newsletter, designed to keep the community informed about all the events taking place at The Lowell School. We're trying out a few formats to see what layout works best to keep you updated on all things Lowell!

Meet your Co-Presidents:

- Maia Borus, proud mother of Isis Rose Borus, a 6th grader.
- Alyssa Fant, dedicated mother of Zoe, a 7th grader.



PI DAY - MARCH 14TH

Lowell celebrated Pi Day in a big way! Students participated in a 'Pi' eating contest in the cafeteria! Please take a look at the pictures on Lowell's website (www.TheLowellSchool.com) Pi Day is an annual celebration of the mathematical constant π . Pi Day is celebrated on March 14th since 3,1 and 4 are the first three significant figures of π .



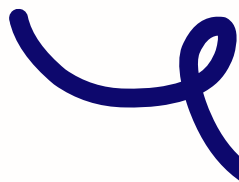
HARLEM MAGIC - MARCH 20TH

The Harlem Magic Masters are set to entertain students on Thursday, March 20th (Thursday). The Magic Masters are a basketball team comprised of players, some of whom have experience in professional leagues, known for their exceptional skills and commitment to fostering positivity among children. Each assembly conveys a specific message, addressing themes such as anti-bullying and self-esteem.




WOMEN'S HISTORY GALLERY WALK - MARCH 27TH

Lowell's 3rd, 4th, 5th and 6th graders will be taking a Women's History Gallery walk in the gymnasium. Students have been researching an inspirational woman of their choice and will create informative posters detailing their findings. These posters will be displayed in the gym, allowing each class to circulate and appreciate the work of their classmates, as well as learn about other noteworthy women.



MARK YOUR CALENDARS - MORE TO COME!

- Monday, March 17th - St. Patrick's Day - WEAR **GREEN!** 
- Thursday, March 20th - 1st day of Spring!
- Friday, March 21st - 7th grade **BREAKFAST SALE** - room 6
- Thursday, March 27th - 7th grade **LUNCH SALE** - room 7
- Friday, March 28th - Third Marking Period Ends
- Friday, March 28th - 8th grade **SNACK SALE** - room 9
- Monday, March 31st - Eid al-Fitr Observed - School Closed

Please note these important upcoming dates:

- April 14th - 18th - Spring Recess - School Closed
- April 24th- School Musical 7 p.m.
- May 16th - Student Appreciation Day
- May 26th - Memorial Day - School Closed
- June 5th - Eid al-Adha - School Closed
- June 6th - Staff Development Day - Staff only
- June 19th - Juneteenth - School Closed
- June 26th - 8th grade graduation
- June 26th - LAST DAY OF SCHOOL!

LOOKING AT THE LOWELL HIGH SCHOOL IN MARCH:

TOGETHER WITH PROUD LOVED ONES, WE CELEBRATED OUR 2025 TRADITIONAL **RING CEREMONY**, A SYMBOLIC LONG-STANDING TRADITION. EACH STUDENT RECEIVED HIS/HER INDIVIDUALLY AND UNIQUELY DESIGNED CLASS RING OR NECKLACE. THIS SPECIAL JEWELRY SERVES AS A PHYSICAL REMINDER OF SCHOOL SPIRIT AND THE STUDENT'S YEARS OF HARD WORK, THE EFFORT SHOWN, AND THE MEMORIES COLLECTED AS EACH PERSONALLY PREPARES FOR GRADUATION.

PI DAY MEETS THE LUNAR ECLIPSE...WE ENJOYED APPLE PIES AND MOON PIES...A DELICIOUS WAY TO LEARN AND CELEBRATE MATH AND SCIENCE!

THE ANNE FRANK EXHIBIT: AS ALL CLASSES HAVE BEEN TAUGHT HISTORICAL CONTENT AND THE SIGNIFICANCE OF THE EXHIBIT, OUR STUDENTS WILL HAVE THE OPPORTUNITY TO IMMERSE THEMSELVES AND HAVE THE CHANCE TO LEARN ABOUT ANNE FRANK THROUGH THE MULTIFACETED LENS OF HER LIFE- AS A GIRL, A WRITER, AND A SYMBOL OF RESILIENCE AND STRENGTH.

CELEBRATING **SPIRIT WEEK** BRINGS STUDENTS TOGETHER FOR A VIBRANT CELEBRATION OF SCHOOL PRIDE AND UNITY, AND LOTS OF CREATIVITY AND FUN! THIS MONTH'S CHALLENGE- WEAR GREEN DAY, TIE DYE DAY, HAT DAY, MISMATCH DAY, AND SPORTS TEAM DAY (TEE, JERSEY, OR COLORS).

SUNY COLLEGE PRESENTATION- REPRESENTATIVES FROM SUNY WILL JOIN OUR 11TH GRADERS TO SHARE INSIGHTS, NOT JUST ABOUT THE ACADEMIC PROGRAMS, BUT ALSO ABOUT THE CAMPUS CULTURE, STUDENT ORGANIZATIONS, FINANCIAL AID OPTIONS, AND MORE. STUDENTS WILL HAVE THE OPPORTUNITY TO ASK QUESTIONS TO FIND OUT ABOUT CAMPUS SUPPORT SERVICES AND THE RESOURCES AVAILABLE FOR INTERNSHIPS AND CAREER SERVICES.

LIVING ENVIRONMENT STUDENTS WILL BE VISITING **THE BONE MUSEUM** TO DISCOVER THE HIDDEN HISTORY OF HUMAN ANATOMY. THE BONE MUSEUM IS A RARE REPOSITORY OF REAL HUMAN SKELETONS DEDICATED TO EDUCATIONAL PURPOSES. STUDENTS WILL EXPLORE THE HISTORY OF THE MEDICAL BONE TRADE, HUMAN OSTEOLOGY, UNIQUE PATHOLOGIES, TRAUMA-AFFECTED BONES, AND AGE DEVELOPMENT.

THE LOWELL HIGH SCHOOL- MARK YOUR CALENDARS

APRIL:

4/8/25- COLLEGE AND CAREER FAIR + WEAR YOUR COLLEGE/SCHOOL COLORS

SPIRIT WEEK:

4/7/25- POEM IN YOUR POCKET

4/9/25- 90'S DAY

4/10/25- SAY SOMETHING NICE TO SOMEONE DAY

4/11/25- PANTHER PRIDE DAY (DATES)

4/14/25 TO 4/18/25- SPRING RECESS (SCHOOL CLOSED)

4/22/25- EARTH DAY ACTIVITIES

MAY:

*SPIRIT DAYS AND ACTIVITIES- TBA

5/15/25- THE H.S. MUSICAL- THE WEDDING SINGER (7:00 PM)

5/22/25- JUNIOR & SENIOR PROM

5/26/25- MEMORIAL DAY (SCHOOL CLOSED)

JUNE:

*SPIRIT DAYS AND ACTIVITIES- TBA

6/5/25- EID AL-ADHA (SCHOOL CLOSED)

6/6/25- STAFF DEVELOPMENT DAY (NO STUDENTS)

REGENTS TESTING (JUNE 10, 17, 18, 20)

6/12/25- SENIOR TRIP (DORNEY PARK)

6/19/25- JUNETEENTH (SCHOOL CLOSED)

6/24/25- CELEBRATION DAY

6/25/25- HS GRADUATION

6/26/25- LAST DAY OF SCHOOL FOR STUDENTS

